

# أعجوبة المثالية ARVEL PERFECT

- COMMITMENT FOR EXCELLENCE -



# Contents

• <b>About us</b>	<b>03</b>
• <b>Chairman’s Message</b>	
• <b>Director’s Message</b>	<b>04</b>
• <b>General Manager’s Message</b>	<b>05</b>
• <b>Organization Chart</b>	<b>06</b>
• <b>Key Initiatives</b>	<b>07</b>
• <b>Our Vision, Mission &amp; Core Values</b>	<b>08</b>
• <b>Working Principles</b>	<b>09</b>
• <b>Business Overview</b>	<b>10</b>
<b>1. Products Trading Division</b>	<b>11</b>
• Civil	
• Mechanical	
• Electrical, Telecommunication & Instrumentation	
<b>2. Project &amp; Services Divisions</b>	<b>11</b>
• Electrical SBU	
• Telecommunication & Instrumentation SBU	
• Mechanical SBU	<b>12</b>
• Facilities Management & Maintenance services	
• Civil Works SBU	<b>13</b>
• Mechanical, Electrical & Plumbing SBU	<b>14</b>
• Testing & Commissioning Services SBU	<b>15</b>
(a) Testing of Electrical Networks	
(b) Testing of Solar Plants Equipment	
<b>3. HR Services Division</b>	<b>15</b>
• Man Power Supply SBU	
(a) Recruitment & Man Power Solutions	
(b) Bulk Recruitment	
(c) Payroll Administration Services	
(d) Contract Staffing Solutions	
<b>4. Mechanical Division</b>	<b>17</b>
• Mechanical Works SBU	
• Fabrication SBU	
• <b>Project Philosophies</b>	<b>19</b>
• <b>List of Construction Projects under Execution/Executed</b>	<b>21</b>
• <b>Project Photographs for Sites Executed/under Execution</b>	<b>23</b>
• <b>HSE Policy &amp; Statement</b>	<b>26</b>
• <b>Certifications</b>	<b>28</b>
(a) JSRS Renewed Certificate	<b>29</b>
(b) SEZAD Certificate	
(c) OCC Membership Certificate	<b>30</b>
(d) SME Certificate	<b>31</b>
(e) Company Registration (CR)	<b>32</b>
(f) VAT Registration Certificate	<b>33</b>
• <b>Contact us</b>	<b>35</b>
• <b>Location</b>	

# About us

Marvel Perfect is contributing to Oman's growth and development with their vision and commitment to excellence. Market leaders in Mechanical, Electrical, Instrumentation & Telecommunication works, testing and commissioning ,Fire and safety, Man power supply. then our offerings within aligned sectors. This has provided us with the unique competitive advantage of providing clients with a complete 360-degree solution.

## Chairman's Message

Our company Punch line is "The Stamp of Quality & Professionalism" and each person in our organization ensure to deliver their best and in turn makes each of our customer believe in our punch line. I believe that there is no short cut to achieve business goals with values like moral, ethics, honesty etc. I strongly believe in hard working, delivering promised work to customer and giving preference to customer satisfaction in achieving business success.



Chairman  
Mr. Ali T Baqer Al Lawati

We are focus on growing our business, infrastructure, investment in right people- technology, growing our revenues and thus make it financially strong organization to work with. Before initiating any type of work our team analyzes our clients' requirements and do focus on all the aspects to ensure best result and at the right price. We ensure timely delivery and honest commitment towards any of our services. I also believe in strong after sales support and customer satisfaction and this is the reason, I have separate division only to look after support for all our services.

Once again thank you for taking your time to read my thought. Looking forward for longer & stronger business relation.

# Director's Message

Marvel Perfect passion to match the right people to the right job has helped us to amass last 4 years of successful stories in the human resource business.

Each client and candidate is like an extended family member to us. And like family, we understand and anticipate your needs, matching the right candidates to the right clients.

Our professionalism, coupled with a strong personal touch enhances the probability of success at every step. Our goal is to create a long-lasting



Director  
Mr. Adnan T Baqer Al Lawati

client-candidate relationship, which will translate into long term winning strategies and exponential growth for both parties.

But we know that finding a candidate with the right skill set is not the be all and end all. At Marvel Perfect, we understand that overall chemistry between the candidate and the existing management is paramount in ensuring a good match.

Consultants are empowered with the final authority and flexibility to deal with each client's requirements. In our commitment to finding the best match, we customize our approach, systems and processes not only from client to client but also from assignment, all the while keeping underlying principles common.

To ensure success, we believe in hiring people with the right values and specialized experience.

Our whole team, from apprentices to board directors, support this vision and welcome the opportunities afforded to us to demonstrate our services. We are always ready to respond to your enquiries.

# General Manager's Message

Our company's principal activity is to undertake Electromechanical and telecommunication works. Our Product Trading Div. acts as a sole distributor and dealer for a wide range of brands ranging from Civil, Mechanical, Electrical, Telecommunication, Fire and safety and Manpower supply.

We believe that the most important determinant factor of the competitive landscape in the near future will be offering value to customers. Companies that place customers at the heart of their business and give them the highest

priority, and who are deeply committed to serving their customers, will enjoy success in this period and take the lead in the competition.

Our company attaches tremendous importance to the rendering of services required by our customers at the right time, through the right delivery channel and with the right value proposition.

We are proud of what we have achieved so far, yet we constantly strive to reach new heights of excellence by introducing new concepts, technologies and adding new products.

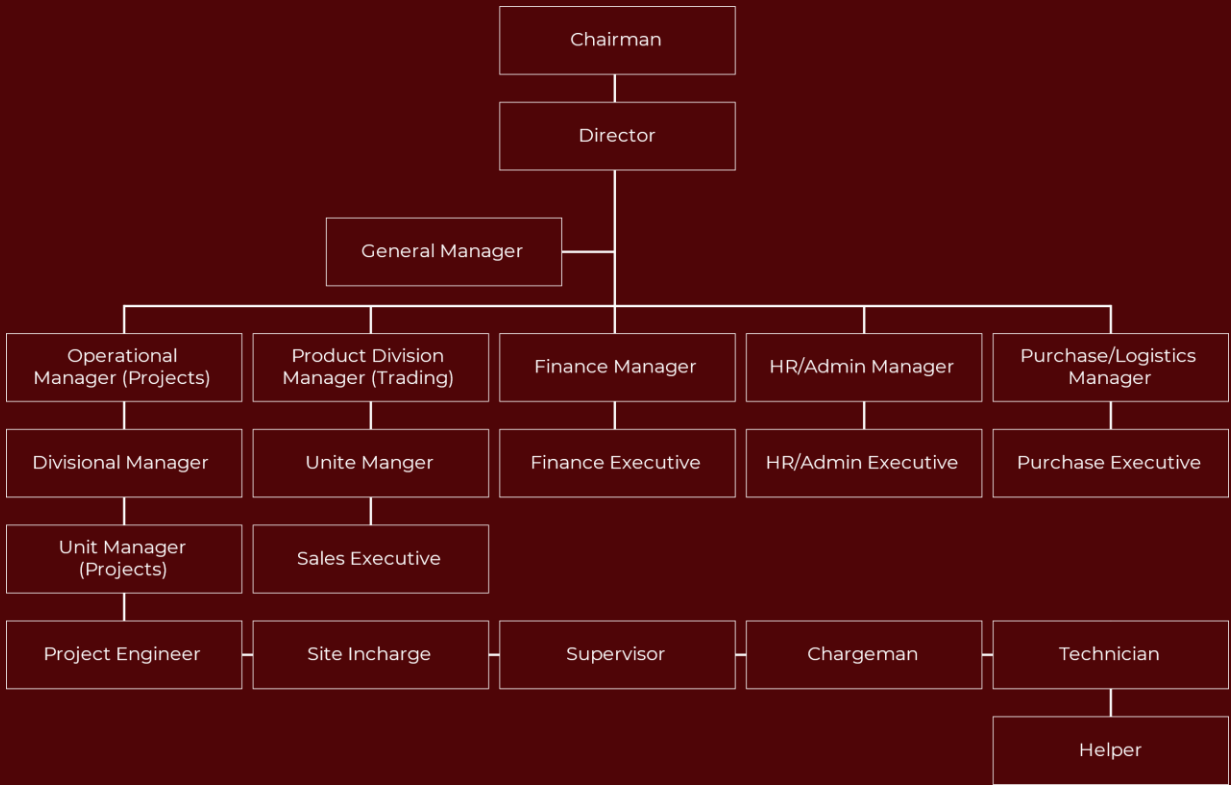
Our team is always on the move, visiting customers and partners across Oman, in order to identify the needs of companies and clients and to create new business opportunities.

In the years ahead, the force of rapid technological change and globalisation will bring new challenges for the economy. I, together with our team look forward to taking on new challenges in the future with the continued support and blessings of our customers and business partners.



**General Manager  
Mr. Mithilesh Kumar**

# Organization Chart



# Key Initiatives



Effective and diversified resource utilization and value



Client's focused Approach & Meeting clients' Expectations



Business expansion and marketing



Developing the workforce and promoting flexible team



## Our Vision

To be a leading engineering-based construction & Trading company recognized for its excellence in deliverables in conformity with high standards & To be the clients' first choice in one stop solutions for specialized technical requirements across Oman.



## Our Mission

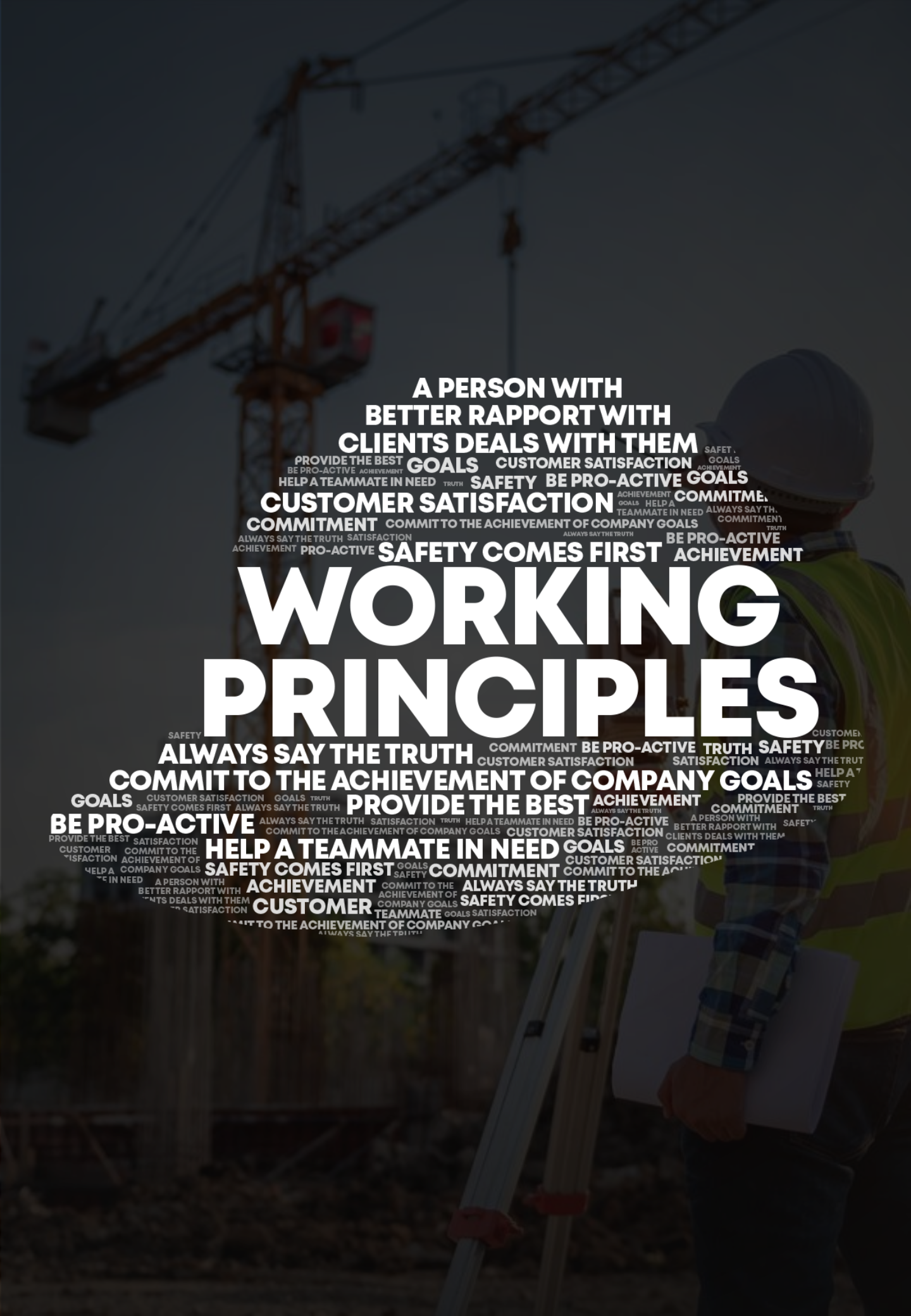
To deliver value Engineered Projects on time, sales & services based on customer satisfaction and cost-effectively with uncompromising quality and safety standards. & To provide continuous improvements on personnel and technical front, care for employees and target new market segments for horizontal growth stability.



## Our Core Values

- INTEGRITY
- SAFETY
- COMMITMENT
- QUALITY
- EXCELLENCE
- TEAMWORK
- RESPONSIBILITY
- COMMITMENT TO CUSTOMER






**A PERSON WITH  
BETTER RAPPOROT WITH  
CLIENTS DEALS WITH THEM**

**PROVIDE THE BEST GOALS CUSTOMER SATISFACTION SAFETY  
BE PRO-ACTIVE ACHIEVEMENT GOALS  
HELP A TEAMMATE IN NEED TRUTH SAFETY BE PRO-ACTIVE GOALS  
CUSTOMER SATISFACTION COMMITME.  
COMMITMENT COMMIT TO THE ACHIEVEMENT OF COMPANY GOALS ALWAYS SAY TH.  
ALWAYS SAY THE TRUTH SATISFACTION ALWAYS SAY THE TRUTH BE PRO-ACTIVE  
ACHIEVEMENT PRO-ACTIVE SAFETY COMES FIRST ACHIEVEMENT**

# **WORKING PRINCIPLES**

**ALWAYS SAY THE TRUTH COMMITMENT BE PRO-ACTIVE TRUTH SAFETY BE PR  
CUSTOMER SATISFACTION SATISFACTION ALWAYS SAY THE TRUT  
COMMIT TO THE ACHIEVEMENT OF COMPANY GOALS HELP A T  
SAFETY  
GOALS CUSTOMER SATISFACTION GOALS TRUTH PROVIDE THE BEST ACHIEVEMENT PROVIDE THE BEST  
BE PRO-ACTIVE ALWAYS SAY THE TRUTH SATISFACTION TRUTH HELP A TEAMMATE IN NEED BE PRO-ACTIVE A PERSON WITH SAFETY  
PROVIDE THE BEST SATISFACTION COMMIT TO THE ACHIEVEMENT OF COMPANY GOALS CUSTOMER SATISFACTION BETTER RAPPOROT WITH SAFETY  
CUSTOMER COMMIT TO THE HELP A TEAMMATE IN NEED GOALS BE PRO-ACTIVE COMMITMENT CLIENTS DEALS WITH THEM  
HELP A COMPANY GOALS SAFETY COMES FIRST GOALS SAFETY COMMITMENT COMMIT TO THE ACHIEVEMENT OF COMPANY GOALS  
HELP A TEAMMATE IN NEED A PERSON WITH SAFETY COMES FIRST ALWAYS SAY THE TRUTH  
BETTER RAPPOROT WITH ACHIEVEMENT COMMIT TO THE ACHIEVEMENT OF ALWAYS SAY THE TRUTH  
CLIENTS DEALS WITH THEM CUSTOMER ACHIEVEMENT OF SAFETY COMES FIRST  
SATISFACTION TEAMMATE GOALS SATISFACTION  
COMMIT TO THE ACHIEVEMENT OF COMPANY GOALS ALWAYS SAY THE TRUTH**



# **BUSINESS OVERVIEW**

## Products Trading Division

- Civil
- Mechanical
- Electrical, Telecommunication & Instrumentation
- Water & waste water Division

## Project & Services Division

- **Electrical SBU:**

EPC of Electrical Projects

- Installation of Electrical Equipment related to MV/LV Substations
- Power/Control Cable Laying, Termination & testing
- Installation of Generators & UPS Systems in Industries
- Installation of MV/LV Switch Board, AC/DC Drives
- Cable trays/Cable Management System
- Sports Arena Lighting/Area Lighting/Road Lighting
- Earthing & Lighting Protection Systems

- **Telecommunication & Instrumentation SBU:**

Instrumentation and Telecommunication (IT) division is specialized in structured cabling solutions, WIFI solutions, industrial switches, and routers solutions.

- FO Cable network
- CCTV installation
- Installation, testing, and commissioning of P & A systems
- Generation of Instruments List and Preparation BOM/P & ID
- Generation of Specific Data Sheets for Field Instruments
- Installation & testing of Process Impulse line & Instrument air supply lines
- Communication cable management system such as CAT6, PROFIBUS, MODBUS, GENIUS BUS
- Installation, configuration/calibration, and commissioning of various types of analyzers

- **MECHANICAL SBU:**

- Erection of Steel Plant Equipment, Utilities (water pumps, cooling tower, hydraulic and Air Compressor System) and associated pipework)
- Installation of Conveyors, Silos, Hoppers, Bulk Material Handling Equipment
- Installation of Process Instruments, Metering & Monitoring system, Valves, Instrument piping
- Utility HDPE/GRP/MS/SS Piping
- Firefighting System Comprising of Dry/Wet raisers, hydrants, hose reel system
- Plumping/Sanitary Installation to Industrial/Commercial/Residential buildings
- Water supply/Sewage distribution pipework

- **Facility Management Services: SBU**

Marvel Provides Facilities Management & Maintenance services to industrial, commercial & residential installations. Our services include Operations & Maintenance of HVAC installations...

Marvel Provides Facilities Management & Maintenance services to industrial & commercial installations. Preventive maintenance is an important part of our facilities management services. The goal of a successful preventive maintenance program is to establish consistent practices designed to improve the performance and safety of the equipment at your property.

We are committed to providing unique solutions and innovative practices in facilities management services including preventive maintenance, periodic maintenance, troubleshooting to improve the life cycle of equipment & Corrective maintenance..

Marvel Provides Facilities Management & Maintenance services to industrial & commercial installations. Preventive maintenance is an important part of our facilities management services. The goal of a successful preventive maintenance program is to establish consistent practices designed to improve the performance and safety of the equipment at your property.

We are committed to providing unique solutions and innovative practices in facilities management services including periodic maintenance & troubleshooting to improve the life cycle of the equipment.

Performance testing & other Support Services such as;

- Design Validation
  - Load flow & Power Loss Analysis
  - Efficiency Calculation
  - Harmonics Analysis & Mitigation
  - Annual Maintenance & Periodic check-up
  - Operation and maintenance of data centers
- **CIVIL WORKS-SBU**

This division represents one of the core activities of Marvel Group. They have now the resources and the experience to tender for a variety of civil works and are now recognized on the market for being a reliable strategic partner for international EPC contractors.

Marvel has also identified a niche market in offering civil services for industries, residential and commercial buildings in Sultanate of Oman.

- **MECHANICAL, ELECTRICAL & PLUMBING SBU:**

MEP wing consists of comprehensive Mechanical, Electrical & Plumbing Construction Projects. We provide the skill, expertise, experience & resources in Project management, installation...

MEP division provides mechanical, electrical, & plumbing construction services. We have the competence, ability, experience & resources to handle the needs of today's fast-track projects in project management, installation, commissioning, & final handover. Our efficient coordination guarantees that the projects run smoothly from start to finish.

Specializes in complex projects and has experience in MEP design, installation, testing, and commissioning for industrial projects, commercial developments, residential buildings, cultural centers, luxury villas, and shopping malls. The MEP team is dedicated to meeting the client's objectives. The Division is dedicated to quality and safety, and our reputation for delivering great results is not only acknowledged as a mark of excellence, but also as an expected level of service by our clients. Our engineering team work with precision and close coordination to ensure the best fit is achieved to the satisfaction of the clients and the consultants. With our reliable, high-quality, and timely completion of work, we have carved out a niche for excellence and for providing the best value-engineered solutions.

Marvel pays emphasis on the application of Mechanical & Electrical Engineering Knowledge, Skills and Principles from conception to the design, analysis, execution, operation & maintenance of MEP installations. With its reliable, high-quality, and timely completion of work, the Division has been successful and continues to be competitive in all aspects of its field.

- **TESTING & COMMISSIONING SERVICES SBU:**

Testing & Commissioning of Electrical installations with experienced Engineers as per IEC/IEEE standards:

Testing of Electrical Networks:

- Substation Equipment in AIS & GIS
- Ensure the healthiness of Installed components
- Integrated Testing and various unit protection
- Pre-commissioning and Commissioning assistance
- End to end test & commissioning between substations
- Post commissioning support and coordination

Testing of Solar Plants Equipment:

- PV Modules, strings
- Testing of Solar Inverters & Batteries
- Testing & Commissioning of Balance of System

- **Water & waste Water Division SBU:**

- Design, Engineering, Supply, Installation, Testing & Commissioning of STP/ETP & RO Plant
- Electromechanical Equipment Supply
- Operation & Maintenance of STP/ETP & RO Plant
- Solid Waste Management

## HR SERVICES DIVISION

- **Man Power Supply SBU:**

### Recruitment & Man Power Solutions

We are one of the leading HR solutions companies with over years of experience. Over the years our clients have vouched for our expertise, creativity, and integrity. With industry-acclaimed management and a team of skilled experts, we deliver effective solutions in no time. We constantly push ourselves and build authentic and transparent relationships with all our clients and associates.

### Bulk Recruitment

Marvel uses Information Technology extensively in providing value to clients which include, including recruitment automation databases, online testing, video resumes, and video conferencing. Robust IT Infrastructure and Recruitment automation enable bulk recruitment with high-speed screening processes at Marvel. Our industry-specific networks run deep and wide. Our digital presence attracts the best talent owing to very good engagement scores. Our unique referral program enables us to have a relevant candidate outreach in a short period. We have an in-house database of candidates and have access to overtraining, trade testing, and sourcing partners across Oman. Marvel specializes in sector-specific recruitment for the Heavy Engineering industry, Constructions, Hospitality, and Information Technology.



## Payroll Administration Services

Payroll administration should let you lose focus on the core purpose of your business. Legislations, legal issues relating to regulations, changes in tax law, etc. can divert your energies from where they are required to be., training schemes, and collective pay agreements. A carefully crafted payroll administration system makes for streamlined and efficient management. Marvel's payroll administrators are there to help you to provide solutions before payroll complications even raise their heads. Our salary advisor can take over the processing of monthly salaries for your employees. Besides salary management, they can advise and assist you with matters related to salary taxes, employee benefits, remuneration policies, etc.

## Contract Staffing Solutions

In an ever-evolving landscape of talent and staffing, the labor market has become very complex. At one end, there is pressure of lower employment rates and on the other, the relevant skill sets are often a challenge. Business success is dependent on critical decisions of how much talent is required, whether permanent, temporary, or flexible depending on the business requirement: which may be driven by seasonal demand, for example. We at Marvel are constantly striving to solve this dilemma.

We help you formulate a strategic led approach for managing talent & staffing needs which we co-create with your HR team. This is done through a rigorous understanding of business & its demand cycle. With our unique "Flexi talent solutions" platform, our clients can manage talent requirements, while maximizing the value of the investment.

Marvel offers a suite of consulting services and tools to help transform HR function, accelerate digital implementation, and support change management to deliver an exceptional employee experience

## MECHANICAL DIVISION

### • Mechanical Works : SBU

Testing of Electrical Networks:

- Industrial Shut Down maintenance activities
- Machineries and equipment upgradation
- Mechanical Equipment supply ,erection, Testing & Commissioning
- Heat Ventilation and Air Conditioning Works
- Fabrication & installations of Pipes
- Cold cutting, Painting & blasting services for structures, vessels, Tanks, Pipes etc.,
- Structural fabrication & Construction
- Preventive/Breakdown & Reliability Maintenance of Mechanical equipment
- Testing & Inspection Works
- Repair & Maintenance of all Types of Electromechanical equipment like Pump, Blowers, Compressor, Motors and installation of equipment at site
- Supply of Mechanical Man Power resources to industries
- In House workshop facilities for structural and painting works at Wadi Kabir.

- **Fabrication Unit : SBU**

Our wide-ranging capabilities comprise the custom design, fabrication and erection of structural steel, miscellaneous metals and light ornamental steel structures Services that all under these categories include design, drafting welding, assembly, machining, turning, grinding, milling, drilling, erection, painting, saw work.

We produce accurate and detailed shop drawing encompassing design compliance, fabrication and installation details to oversee each level of production.



# **PROJECT PHILOSOPHIES**



**Timely  
Mobilization**



**Basic  
Design**



**Front End  
Engineering Design**



**Qualified Project  
Management Capability**



**Quality and  
Safety Assurance**



**Highly Skilled  
Manpower**



**Timely Completion of Projects  
and Handing over to client**

In all stages of the project, we utilize the most up-to-date management practices for project implementation, quality assurance, and extensive use of control and information systems. Our services are dedicated to maximizing productivity while also ensuring quality, workplace health and safety, and environmental protection.

## List of Construction Projects under Execution/Executed

Sr.No.	Description	Client	Year
1	CIVIL Works: Construction of Hockey stadium at Al Amerat	KHIMJI RAMDAS CONSTRUCTION LLC	2023
2	CIVIL Works: Ground Floor 600 M2	Omar Al Rawabi	2021
3	CIVIL Works: Fixing of interlocks on sand bedding, Fixing of Kerb stones including Grouting,	Al Zawaya	2023
4	Civil Building Demolition Work	Mint Projects International LLC(MPI), Mabella Villa	2018
5	Structure & Super Structure Civil Work	Mint Projects International LLC(MPI), Salalah	2019
6	Annual Comprehensive Maintenance Work related to Civil, Mechanical and Electrical works in Commercial Building	ELCO National Trading LLC	2018-2021
7	Electrical & Instrumentation Utility Job: EPC-2 Duqm Refinery Project: RMU Installation, Cable Laying & Termination, CCTV Installation work, Street Light Poles Installation work, Earthing Work, Lighting Fixtures/AC Installation Work	Al Ansari Trading Enterprises LLC(Contracting Division)	2021

## List of Construction Projects under Execution/Executed

Sr.No.	Description	Client	Year
8	Electrical Power & Instrument Cable Laying, Tray Fixing, Job-EPC-1: Duqm Refinery	Towel Electrical Projects Co LLC	2021
9	Power & Instrumentation (E&I) Cable Laying Job: EPC-1 : Duqm Refinery	Third China Chemical Construction Co LLC(TCC)	2021-2022
10	Mechanical Erection Job	Third China Chemical Construction Co LLC(TCC)	2021-2022
11	CCWS LV Upgradation Job: 750 KVA DG Installation Job, Upgradation of 500 KVA Transformer to 1000 KVA Transformer, Installation, T&C of 100 KVA Industrial UPS and other PLC Related Jobs	VA TECh Wag Bag Muscat LLC-Majis Industrial Services,Sohar Port,Sohar	2021-2022
12	MEP Works: ICDC Al Mouz Project	Sai Trading Projects	2022
13	CIVIL Works:G+2=800m2	MR. Basheer Al Balousi	2022
14	CIVIL Works:Ground Floor 400 M2	Mr.Salah Al Rawabi	2021

## List of Construction Projects under Execution/Executed

Sr.No.	Description	Client	Year
15	Muscat International Airport Oman	Replace & Fixing New Tile on Ablution at SFC, Muscat International Airport	2024
16	Al Naba	Design, Supply, Installation ETP Mahout 275 m3/day at Sinaw	2014
17	Ministry of Environment and Climate Affairs	Design, Supply, Installation of 200 m3/day RO plant @ Seeb	2015
18	Royal Court Affairs	Design, Supply, Installation of 250 m3/day STP Plant @ Robot Palace Salalah	2016
19	Modern Water-UK	Upgradation and Refurbishment of 100 m3/day STP plant @ Masirah	2018
20	Modern Water-UK	Upgradation and Refurbishment of 250 m3/day RO plant @ Shanna	2019
21	Royal Oman Police	O&M of 350 m3/day MBBR STP at Sohar PC	2017-2018
23	Al Naba	Q & M of ETP plant 275m3/day at Sinaw	2015-2016
24	Nizwa University	Operation & Maintenance of SPT 300 m3/day at Nizwa	2013-2014
25	Royal Court Affairs	Operation & maintenance of RO plant in Oryx Farm Haima	2012-2013



# Project Photographs for Construction Sites Executed/under Execution



Duqm Refinery EPC-1 TCC Projects



Majis Industrial Services, Sohar Port Project



ICDC , MEP Projects, Al Mouz, Muscat.



Duqm Refinery EPC-2 Al Ansari Projects

# Project Photographs for Construction Sites Executed/under Execution



Duqm Refinery EPC-1 TCC Projects



Duqm Refinery EOC2 Al Ansari Projects



Civil Works, Philips Pharmaceutical



Safety Tool Box Talk

# Project Photographs for Mechanical Work Sites Executed/under Execution



Duqm Refinery - Fabrication Work



Duqm Refinery - Testing & Inspection Works

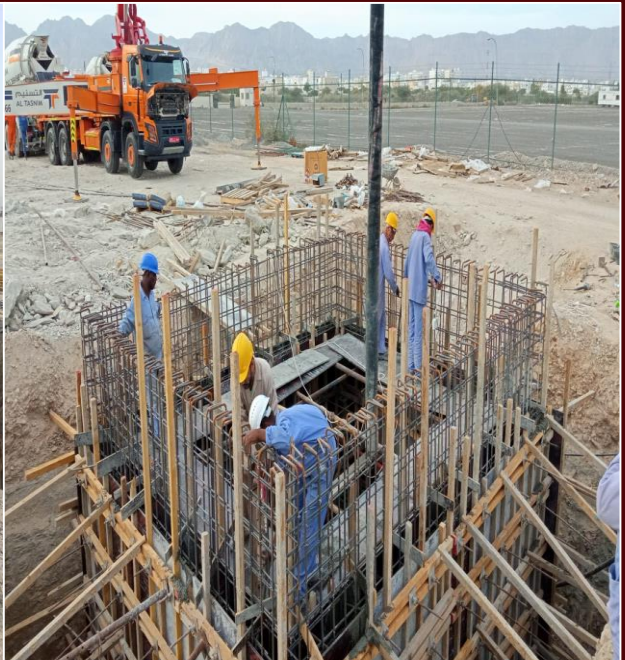


Sohar - HVAC



Sohar - Sandblasting

# Project : Hockey Stadium Al Amerat for Civil Work Sites Executed/under Execution



# Project : Hockey Stadium Al Amerat for Civil Work Sites Executed/under Execution



# Our Prestigious Project & Operation Maintenance – Water & Waste water Division







# **HSE POLICY & STATEMENT**



Marvel Perfect always conduct business in a manner that does not harm public and environment, this is achieved through the implementation of QHSE Policies which includes:

- Setting specific goals and promoting continual improvement in order to prevent any incidents, accidents or environmental pollution.
- Providing high-quality services to our clients, ensuring the health and safety of our employees and others who may be impacted by our operations, protecting the environment, and continually improving the effectiveness of our Health, Safety, and Environment (HSE) Management system.
- Management accountability and individual employee contributions for HSE issues.
- Periodic audit and review of our own HSE management system.

We've put in place a Health, Safety, and Environmental Management System that not only satisfies our clients' needs, but also ensures that our values and convictions are ingrained. This was proved even further by our active implementation of essential leading initiatives to guarantee that we take a proactive approach to HSE. This is a long-term commitment that will be strengthened and expanded as time goes on.

Intensive training programs are used to build and maintain staff safety awareness. We have had safe and seamless years of operations with comparatively few accidents as a result of Marvel Perfect's striving dedication to safe and healthy workplaces.

## 1. POLICY & OBJECTIVES.

### QHSE POLICY STATEMENT

Marvel Perfect aimed to deliver the high quality electro mechanical projects like STP/ETP/RO and Operation Maintenance to its customers it's a commitment to continual improvement by implementing and maintains the integrated management system in the line with ISO 45001:2018, ISO14001:2015 & ISO 9001:2015. Requirements to provide a safe and healthy work environment to prevent all incidents ill health and protect the environment from potential damaged during our business activities and enhance the quality of our services. Marvel Prefect Management will ensure that all concerned parties (including subcontractors) are provided with a copy of the QHSE policy statement. Policies shall be displayed on relevant notice boards, and made available at sites. Also, QHSE polices should be discussed during site HSE induction.

#### Objectives

The main objective of QHSE plan is to drive QHSE improvement throughout the contract in Marvel Perfect locations in a consistent manner and to ensure that the HSE performance targets set out in this plan are achieved through action items planned.

- Achieve goal zero for fatalities, LTI, TRC and Road Traffic accident, occupational illness and environmental incident.
- Attain improvement in Road Safety through agreed action items with client and Subcontractors.
- Manage sub-contractors more effectively for the minimization of incidents through hazard elimination and control measures.
- Training to ensure competent workforce.

A hand is shown from the bottom, holding a glowing starburst graphic. The starburst features a checkmark inside a circle, which is set against a gear-like background. Below the starburst, the word "CERTIFICATION" is written in bold, white, uppercase letters. The entire scene is set against a dark background with a faint, glowing starburst pattern.

**CERTIFICATION**



## CERTIFICATE OF APPROVAL

*Awarded to*

MARVEL PERFECT

As an Approved Supplier to the Oman Oil & Gas Industry's Joint Supplier Registration System (JSRS)

Country of Origin : Oman JSRS Supplier Code : OM107027

Registration Date : 19-02-2018 Valid till : 19-02-2027

Special Status : NIL National SME Classification : SME-Small



وزارة الطاقة والمعادن  
Ministry of Energy and Minerals



This Certificate is Issued for supplying Products & Services to Oil & Gas and other related Industries in Oman and is not valid to acquire permits from other Governmental or Non-Governmental agencies.

Certificate No. : JSRSOM2537310990003 / Issued On : 18-02-2024

هيئة تنمية المؤسسات  
الصغيرة والمتوسطة  
SMEs Development Authority



## بطاقة ريادة الأعمال

أعجوبة المثالية

MARVEL PERFECT

رقم السجل التجاري 1285879

تاريخ إنتهاء البطاقة 2024-11-28

البطاقة أصدرت من قبل هيئة تنمية المؤسسات الصغيرة والمتوسطة

OMAN CHAMBER OF  
COMMERCE & INDUSTRY



عمارة تجارة وصناعة عمان

## شهادة انتساب Membership Certificate

Oman Chamber of Commerce Industry hereby certifies that the		تشهد غرفة تجارة وصناعة عمان بأن	
MARVEL PERFECT		اعجوبة المثالية	
CR No	1285879	١٢٨٥٨٧٩	رقم السجل
Registered in the grade	First	الاولى	سجلت بالغة
OCCI No	21218	٢١٢١٨	رقم الغرفة
Date of issue	15/02/2024	١٥/٠٢/٢٠٢٤	تاريخ الإصدار
Date of expiry	11/02/2025	١١/٠٢/٢٠٢٥	تاريخ الانتهاء
Head Office	Muscat Governorate	محافظة مسقط	المقر الرئيسي



Chamber's Membership is necessary to complete the  
procedure of the government transactions

عضوية الغرفة مهمة في إكمال إجراءات المعاملات الحكومية.

CR Number 1285879

رقم السجل التجاري 1285879

Commercial Name  
MARVEL PERFECT

الاسم التجاري  
أعجوبة المثالية

Legal Type Individual Firm / Merchant

الشكل القانوني تاجر فرد

Head Q Al Khuwair / Bousher / Muscat Governorate

المركز الرئيسي الخوير / بوشر / محافظة مسقط

P.O.Box: 250

Postal Code: 131

رمز بريدي: 131

ص.ب: 250

Telephone: 968 99340034

Fax: 968 24488359

968 24488359

فاكس:

968 99340034

هاتف:

Email: ALITBAQER@GMAIL.COM

البريد الإلكتروني: ALITBAQER@GMAIL.COM

Establishment Date: 07/02/2017

تاريخ التأسيس: 07/02/2017

Registration Date: 08/02/2017 Active

تاريخ التسجيل التجاري: 08/02/2017 نشط

Expiry Date: 07/02/2027

تاريخ انتهاء السجل التجاري: 07/02/2027

Fiscal Year End: 07/02

تاريخ انتهاء السنة المالية: 02/07

Cash Capital: 150,000

رأس المال النقدي: 150,000

Kind Capital: 0

رأس المال العيني: 0

Total Capital (Omani Riyal): 150,000

رأس المال الكلي (بالريال العماني): 150,000

No. of Shares: 0

عدد الأسهم: 0

Tax Registration Number: 1037599

1037599

رقم التسجيل الضريبي:

### Registered Commercial Activities

### الأنشطة التجارية المسجلة

461004:Trading business agencies (excluding portfolio and security exchange)

461004:وكالات الأعمال التجارية (لا تشمل أعمال المحافظ والمتاجرة بالأوراق المالية)

The Commercial Registration is not considered as an approval or a warranty for a license of bringing in labour.

لا يعتبر هذا السجل التجاري موافقة أو ضمانا للحصول على ترخيص باستخدام قوى عاملة وافدة.

كساح

أمانة السجل التجاري  
21/09/2022



إعادة طباعة :

KHALID HAMMAD



Certificate No.:11946816

Issue Date: 06/06/1445 AH  
19/12/2023

Cr No.: 1285879

رقم الشهادة: ١١٩٤٦٨١٦

تاريخ الإصدار: ١٤٤٥/٠٦/٠٦ هـ  
٢٠٢٣/١٢/١٩

رقم السجل التجاري: ١٢٨٥٨٧٩

### VAT Registration Certificate

#### شهادة تسجيل ضريبة القيمة المضافة

The Tax Authority certifies that MARVEL PERFECT has been registered for Value Added Tax (VAT) from an effective date of 01/07/2021 and has been given VATIN OM1100080371.

يشهد جهاز الضرائب بأنه قد تم تسجيل أعبوية المتألية بضريبة القيمة المضافة برقم تعريف ضريبي OM1100080371. وان تاريخ نفاذ التسجيل هو 2021/07/01.

Registration address Sultanate of Oman, Muscat, Bousher, 250 ,131 ,الخوير, busher, 0.

عنوان التسجيل سلطنة عمان, محافظة مسقط, بوشهر, الخوير, busher, 0 ,250 ,131.

This certificate is valid until 17/12/2024.

هذه الشهادة صالحة حتى تاريخ 2024/12/17.

Tax Authority reserves the right to withdraw this certificate any time before the expiry date.

يحتفظ جهاز الضرائب بحق سحب هذه الشهادة في أي وقت قبل تاريخ الانتهاء.



Tax Authority  
جهاز الضرائب



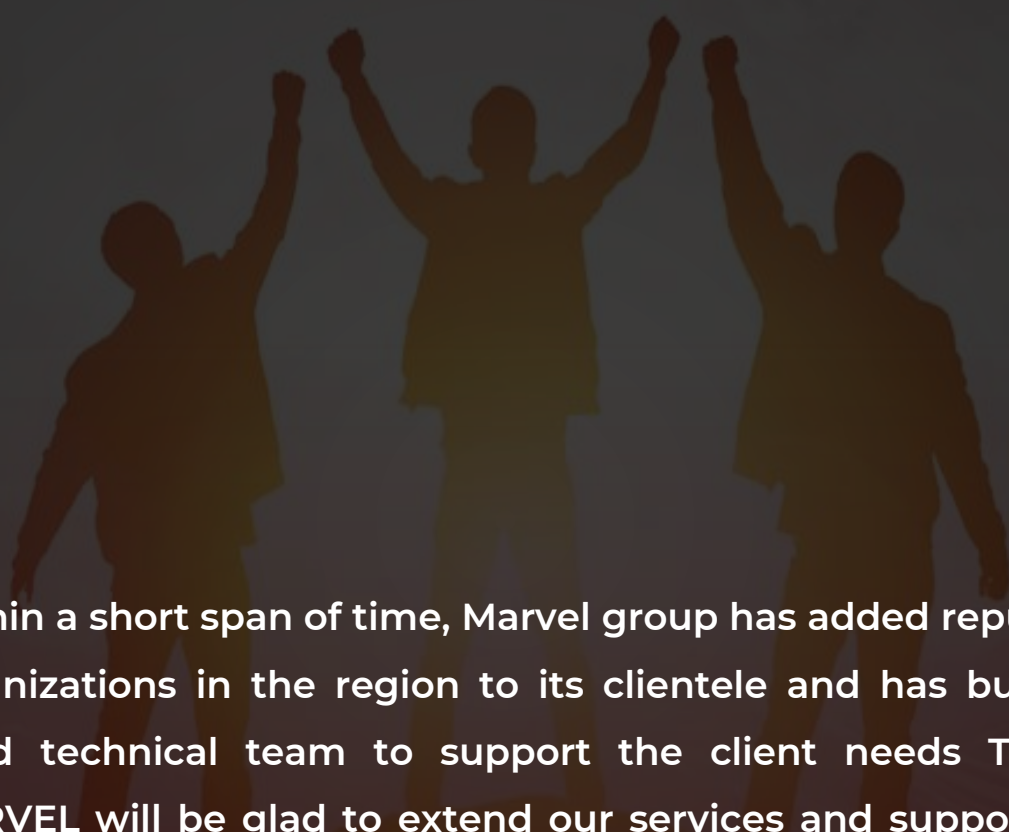
ص.ب : 285، الرمز البريدي: 100 | مسقط، سلطنة عُمان | هاتف: +968 24746996  
P.O. BOX: 285, Postal Code: 100, Muscat, Sultanate Of Oman | TEL: +968 24746996

مركز الاتصالات: 1020 Call Center:

www.taxoman.gov.om

تقدمنا  
Moving Forward  
with Excellence





Within a short span of time, Marvel group has added reputed organizations in the region to its clientele and has built a good technical team to support the client needs Team MARVEL will be glad to extend our services and support to your esteemed organization in all areas of our expertise.

We have successfully achieved unprecedented sales growth in both domestic and industrial market based purely on the quality of our supply products and services with recognized brand which is accepted globally in the market & understand your Organization's values and your need very well, so we would like to extend our Interest in forming a business relationship with your esteem organization.



# Contact us

Please get in touch if you have any queries.



+968 2447 2204



+968 9530 0309



+968 2448 8359



info@marvelperfect.com

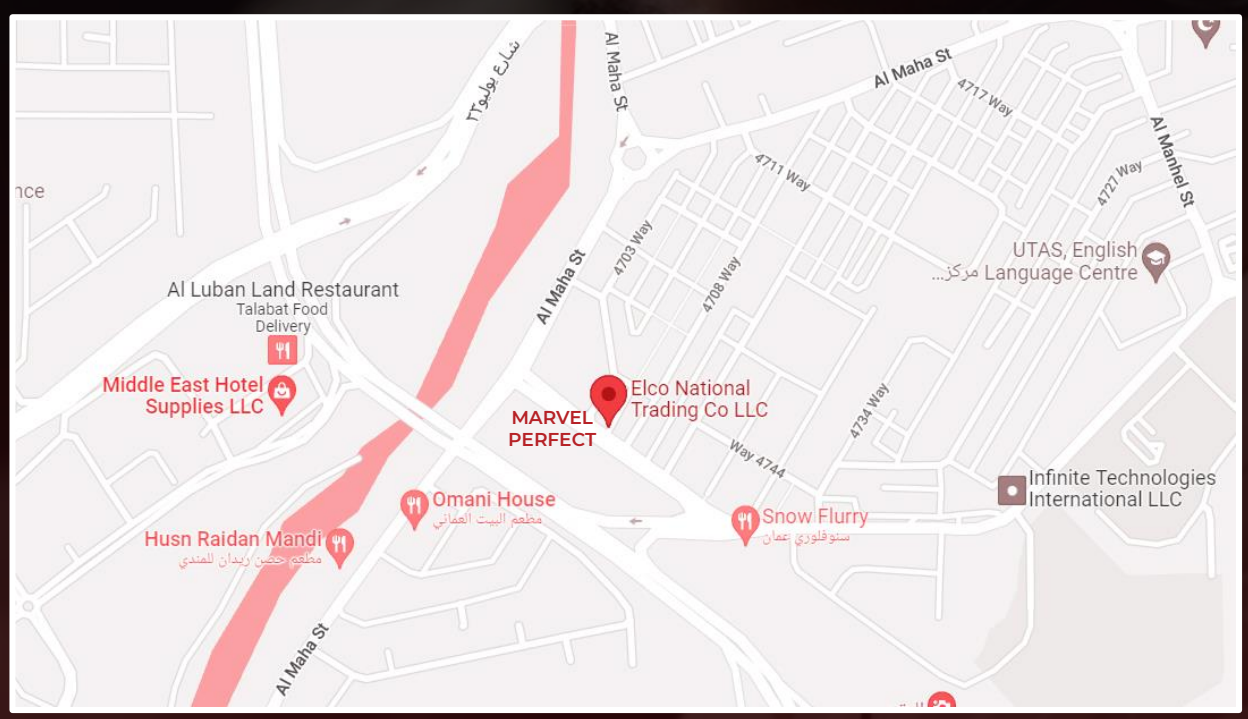



marvelperfect.com



Al Khuwair

# Location





**LOOKING FORWARD  
FOR LONG TERM  
BUSINESS ASSOCIATION**

**MARVEL PERFECT**

**P.O.BOX 250, POSTAL CODE 131, SULTANATE OF OMAN.**

**MOB +968 9530 0309 TEL +968 2447 2204 FAX +968 2448 8359**